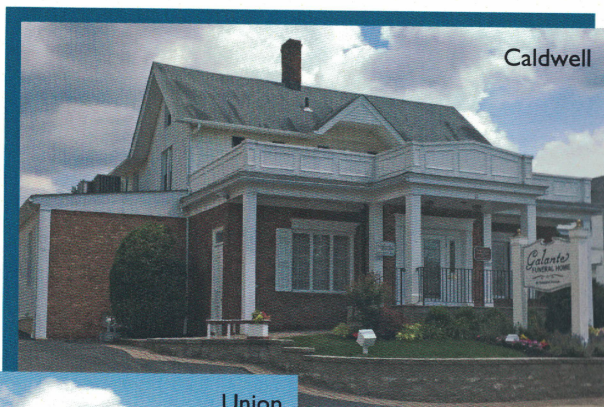
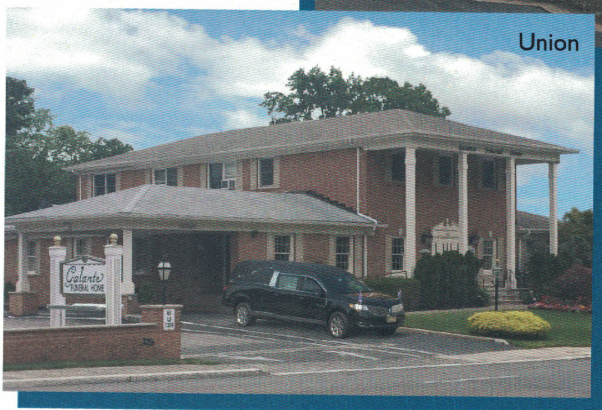


Galante

FUNERAL HOME



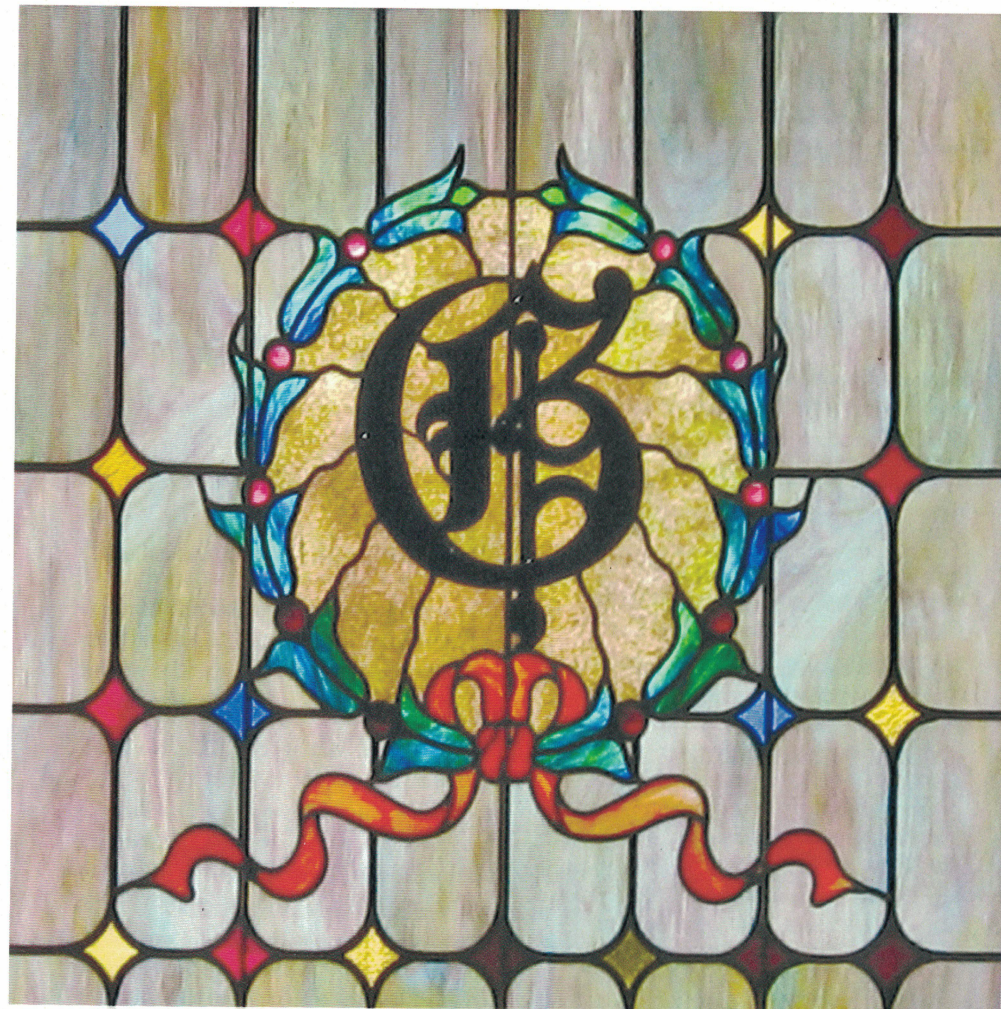
Caldwell



Union

N.J.A.C. 13:36-5.21 – A person who owns 50 percent or greater interest in this registered mortuary also owns 50 percent or greater interest in the following registered mortuaries in the State of New Jersey: Galante Funeral Home, Union; Galante Funeral Home, Caldwell.

Galante Funeral Home is a proud member of the Thanexus®, Inc. family—a growing cooperative of independently owned, family-operated, community based funeral homes—providing excellence in funeral service.



Galante

FUNERAL HOME

GENERAL PRICE LIST

Effective as of January 1, 2024 and subject to change

www.galantefh.com

Galante FUNERAL HOME

FUNERALS CAN TAKE MANY FORMS

our families customarily select:
professional services

Basic services of funeral
director and staff \$2,995
Embalming 995
Dressing, casketing and
cosmetizing. 495

ceremonies (local)

One full day visitation for guests . 990
At funeral home, to church and
then to place of committal . . . 675

transportation (local)

Transfer of deceased from place
of death to funeral home 500
Hearse 550

subtotal \$7,200

CHOOSE WHAT IS RIGHT FOR YOU You
may add to or delete any item, except
the "Basic services of funeral director
and staff."

ADD TO THE SUBTOTAL, the cost of
any casket, outer burial container or
cash advance items to arrive at the
estimated total funeral cost.

Credit cards accepted:



YOUR COMMUNITY FUNERAL HOME

Professional, compassionate service
available 24 hours a day, 365 days a
year.

We suggest that for the time of
visitation and funeral someone
remain in your home or a close
neighbor maintain a watchful eye
during your absence.



• 2800 Morris Avenue, Union NJ 07083
Victor J. Galante, Manager, N.J. Lic. No. 3318
908-687-2110

• 54 Roseland Avenue, Caldwell NJ 07006
Frank R. Galante, Manager, N.J. Lic. No. 4891
973-226-1801

Frank Galante, N.J. Lic. No. 3110

Steven M. Galante, N.J. Lic. No. 3409

Brenda L. Galante, N.J. Lic. No. 4122

Jason D. Galante, N.J. Lic. No. 5253

Timothy M. Lischak, N.J. Lic. No. 4868

Charles Castiglione, III, N.J. Lic. No. 4245

Isabela Pereira*, N.J. Intern Registration No. 00489100

Carlos Silva*, funeral attendant

Frank R. Galante, 1923-2016

Visit us at: www.galantefh.com

Contact us at: gfh2800@gmail.com

* Unlicensed and not qualified to make funeral arrangements,
embalm or conduct funerals.

TO THE FAMILIES WE SERVE,

When you call on us, during your time of need
we will serve you with compassion and dignity.
Your expression of specific needs and desires for
the funeral service allows us to memorialize the
life lived in a personal and meaningful way.

In compliance with state and federal regulations,
we provide you with complete cost information,
including this color coded General Price List
and corresponding itemized estimate. If at any
time you do not understand what a charge is or
how it relates to your arrangements, please stop
us for an explanation. We want each family we
serve to be comfortable with the funeral choices
they make.

Coordinating funeral services will require our
immediate attention; please rest assured that we
will be here to assist you, even after the service
is over. Because the associated administrative
issues that follow a death can be overwhelming,
we offer many years of experience in helping
families manage the surviving life affairs of the
deceased, including but not limited to referrals
and guidance in:

- Probating the will
- Settling the estate
- Filing for life insurance claims
- Providing referrals for elder care
services
- Obtaining benefits from:
 - Social Security Administration
 - Veterans Administration
 - Pension and union funds

We are here to help for as long as you need us.

GENERAL PRICE LIST *Effective as of January 1, 2024 and subject to change*

The goods and services shown
below are those we can provide
to our customers. You may
choose only the items you
desire. However, any funeral
arrangements you select will include
a charge for our basic services
and overhead. If legal or other
requirements mean you must buy
any items you did not specifically
ask for, we will explain the reason in
writing on the statement we provide
describing the funeral goods and
services you selected.

CONTENTS

*six categories of
funeral charges:*

professional services	3-4
ceremonies	5
transportation	6
merchandise	7-11
cash disbursements	12
optional packaged services	12-13

services

PROFESSIONAL SERVICES OF FUNERAL DIRECTOR AND STAFF

BASIC SERVICES OF FUNERAL DIRECTOR AND STAFF

Services included, but not limited to: (1) responding to the initial request for service; (2) conducting the arrangement conference; (3) preparation of biographical and statistical data; (4) examination of financial settlement options; (5) preparation and filing of papers, permits and authorizations; (6) coordination with those providing other services; (7) preparation and placement of obituary notices (includes posting on funeral home website); (8) retention and care of remains prior to commencement of post-death activities; (9) overhead expenses relative to our facility and operations, such as occupancy, administrative and equipment costs.

This fee for our basic services and overhead will be added to the total cost of the funeral arrangements you select. (This fee is already included in our charges for direct cremations, immediate burials, and forwarding or receiving remains.)

- Basic services of funeral director and staff.....\$2,995
- Consulate documentation preparation \$325
- Special services of non-licensed staff.....per hour \$50
- Life insurance processing fee..... \$195

EMBALMING

(including use of preparation room and sanitary care)

Except in certain special cases, embalming is not required by law. Embalming may be necessary, however, if you select certain funeral arrangements, such as a funeral with viewing. If you do not want embalming, you usually have the right to choose an arrangement that does not require you to pay for it, such as direct cremation or immediate burial. If you choose to have an embalming performed, the decedent may be embalmed at a location other than this registered mortuary.

No human remains may remain unburied or uncremated in New Jersey for more than 48 hours unless embalmed or refrigerated. (N.J.A.C. 8:9-1.1)

- Standard embalming \$995
- Autopsy embalming\$1,295

OTHER PREPARATION OF THE BODY

(including use of preparation room but excluding embalming)

- Dressing, casketing and cosmetizing..... \$495
- Professional hairdresser \$85
(hair color, additional \$50)
- Sanitary care (topical disinfection), without embalming..... \$375
- Readjustment and repositioning following transfer from another funeral home..... \$225
- Removal of pacemaker for cremation.....\$95
- Refrigeration charge for unembalmed remains
(includes any sheltering charge)..... per day \$100
- Transfer of cremains.....\$95



CELEBRANT SERVICES

Our funeral home provides the services of a Certified Funeral Celebrant to help create a unique, personalized funeral ceremony. Certified Celebrants are specially trained to conduct personal services for families at the time of death.

This commemoration is an ideal option for those not affiliated with a church or who do not wish to have a religious funeral service. Our Certified

Celebrant can also work with your clergy in an effort to create a unique celebration of the life lived.

- Celebrant Services..... \$500
(Includes family consultation, service in the funeral home and concluding remarks at the place of committal if scheduled immediately following the service.)



Union lobby



ceremonies

rites, rituals, observances, visitations

VIEWING AND VISITATION AT OUR FUNERAL HOME

Use of facilities and staff for viewing, including setup of the visitation area, placement of remains, positioning of floral displays, and supervision and attendance during the hours of visitation.

- One full day visitation (4 hours) \$990
- Half day visitation (2 hours) \$495
- Visitation immediately prior to funeral (per hour or part thereof) \$250
- Note: Saturday, Sunday and holiday visitation additional per 2 hours \$200*
- Use of hospitality room \$385

VIEWING AND VISITATION AT ANOTHER FACILITY

Use of staff and equipment for local transportation of remains, including setup of the visitation area, placement of remains, and supervision and attendance during the hours of visitation.

- Visitation at another facility, local. \$1,000

FUNERAL CEREMONY

Use of facilities and staff for the funeral ceremony, including coordinating the arrangements for the ceremony, staff supervision and attendance, and the use of the funeral home when used for the ceremony.

- At funeral home only \$650
- At funeral home, to church and then to place of committal, local \$675
- At church or other location, local \$500

MEMORIAL SERVICE (without body present)

Use of facilities and staff for the memorial service, including coordinating the arrangements for the memorial service, staff supervision and attendance, and the use of the funeral home when used for the memorial service.

- At the funeral home \$1,200
- At other local facility \$520

AT THE GRAVESIDE SERVICE (whether at cemetery or crematory)

Use of equipment and staff for the graveside service, including supervision and attendance.

- Local service includes accompaniment of the remains to the cemetery or crematory \$400
- Accompaniment of remains to crematory with no service, local \$275
- Accompaniment of remains or cremains to cemetery with no service, local . \$275
- Accompaniment of remains to airport by a licensed funeral director \$325

SHELTERING OF REMAINS

This is a per day charge that will apply when the funeral home is in possession of the remains, except for those days when preparation of the remains, visitation or service take place.

- per day \$50

Please Note: We will do our best to accommodate exclusive use of Chapels A and B but we cannot guarantee it.

transportation

LOCAL AND LONG DISTANCES

All local transfer and transportation fees are based on a radius within 25 miles of the funeral home. Additional distance is charged at the local rate plus \$2.00 per mile.

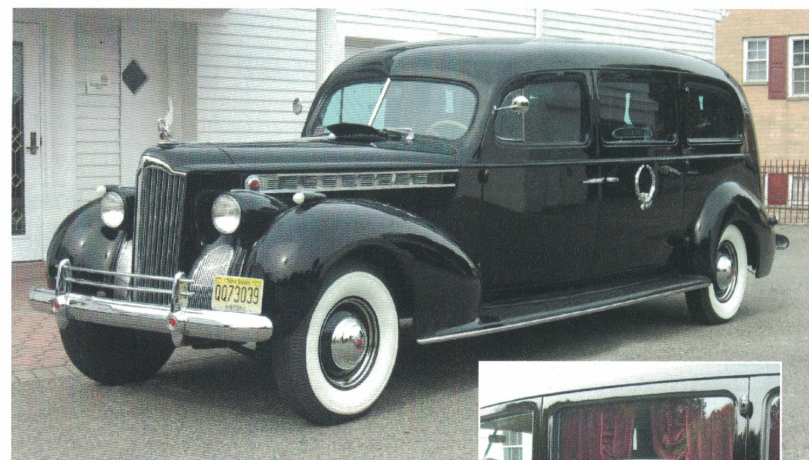
TRANSFER OF REMAINS TO FUNERAL HOME

- Transfer to funeral home (within 25 mile radius) \$500
- Overnight* transfer of remains to funeral home (within 25 mile radius) \$525
- Additional assistant charge for transfer when the location of death, placement or weight and size of the deceased necessitates it \$125

VEHICLES

- Hearse, local \$550
- Hearse, local, for cremains \$275
- Limousine, local \$395
- Flower car, local \$295
- Service vehicle, local \$175
- Family sedan, local \$275
- Each additional mile per vehicle per mile \$2.00
- Flower disposal, local \$100
- Antique hearse, local (*weather permitting*) \$995

* Overnight charges apply from 12:00 a.m. to 6:00 a.m.



1940 Packard antique hearse available for use on funerals.

merchandise

URNS, CARDS, CLOTHING, ETC.

URNS

- Urns range in price from \$295 and up
- Keepsake urns range in price from \$45 and up

OTHER MERCHANDISE

- 1 Remembrance package (includes register book, acknowledgment cards (50), crucifix/cross and video tribute) \$395
- 2 Memorial package (includes register book, acknowledgment cards (50), and crucifix/cross) \$195
- 3 Prayer cards (standard), 100 plus 12 laminated from \$195
- 4 Prayer cards, all laminated, per 100 from \$295
- 5 Prayer cards (with photo) all laminated, per 100 from \$395
- 6 Acknowledgment cards, per 50 \$55-100
- 7 Service programs, (100) from \$295
- Service programs (50) from \$195
- 8 Register book \$50
- 9 Crucifix/cross \$40
- 10 Rosary beads from \$20
- 11 Clothing, men's and women's from \$299
- 12 Memorial wind chime \$35
- 13 Name plate \$45
- 14 Video memorial tribute \$245
- Additional copies each \$30
- 15 Flower packages from \$195



Our arrangement conference room.

cash disbursements

ADDITIONAL EXPENSES

Arranging the funeral ceremony and committal often requires the funeral home to pay others on your behalf. We do not charge for this service. Examples of the people who may expect payment in advance include the cemetery, church/synagogue or clergy. Often the timing of the funeral arrangements—hour, date, or holidays—may make it necessary for us to estimate what advances you want us to make on your behalf.

This list does not include prices for certain items that you may ask us to buy for you, such as cemetery or crematory services, flowers and newspaper notices. The prices for those items will be shown on your bill or the statement describing the funeral goods and services you selected.

OPTIONAL PACKAGED SERVICES

These package charges do not include cash disbursements or anything not expressly stated as being provided. For additional services, please refer to the selections on this General Price List.

FORWARDING OF REMAINS TO ANOTHER FUNERAL HOME

This package charge includes local transfer (within 25 miles) of remains to this funeral home, basic services of funeral director and staff, sheltering of remains for up to 48 hours, embalming, obtaining necessary permits and authorizations (but not the actual cost of death certificates, permits and filing fees) and transfer of remains to Newark Liberty International Airport. It does not include a casket or alternative or shipping container, the use of facilities and staff for any visitation or ceremony—public or private—prior to forwarding the remains, or any sheltering for days on which no post-death activities occur. Nor does it include the charges of a common carrier.

■ \$5,190

RECEIVING OF REMAINS FROM ANOTHER FUNERAL HOME

This package charge includes receiving the remains from another funeral home, transfer of remains from Newark Liberty International Airport to our funeral home, sheltering of remains for up to 48 hours, basic services of funeral director and staff, obtaining necessary permits and authorizations (but not the actual cost of death certificates, permits and filing fees) and local transportation (within 25 miles) to the cemetery or crematory. It does not include the use of facilities and staff for any visitation or ceremony—public or private—prior to burial or cremation, or any sheltering for days on which no post-death activities occur. Nor does it include the charges of a common carrier.

■ \$4,195

OPTIONAL PACKAGED SERVICES

IMMEDIATE BURIAL

■\$4,020 to \$13,015

Our package charges for immediate burial include basic services of funeral director and staff, local transfer (within 25 miles) of remains to this funeral home, sheltering of remains for up to 48 hours, obtaining necessary permits and authorizations (but not the actual cost of death certificates, permits and filing fees), local transportation to the cemetery, sanitary care and preparation of remains for identification. This charge does not include the use of facilities and staff for any visitation or ceremony—public or private—prior to burial, or any sheltering for days on which no post-death activities occur. Nor does it include the actual cost of the grave at the cemetery, or the cemetery's charges for opening and closing of the grave or an outer burial container (if required by the cemetery).

- Immediate burial with container provided by purchaser..... \$4,020
- Immediate burial with Oval Top casket (cloth covered)..... \$5,015
- Immediate burial with casket selected from our funeral home
(in addition to cost of casket)..... \$4,020

DIRECT CREMATION

■\$2,686 to \$8,681

Our package charges for direct cremation include basic services of funeral director and staff, local transfer (within 25 miles) of remains to this funeral home, sheltering of remains for up to 48 hours, obtaining necessary permits and authorizations (but not the actual cost of death certificates, permits and filing fees), local transportation to the crematory, sanitary care and preparation of remains for identification. This charge does not include the use of facilities and staff for any visitation or ceremony—public or private—prior to cremation, or any sheltering for days on which no post-death activities occur. **Nor does it include the actual cost of the cremation process, which is a crematory charge.**

If you want to arrange a direct cremation, you can use an alternative container. Alternative containers encase the body and can be made of materials like fiberboard or composition materials (with or without an outside covering). *The containers we provide are cardboard.*

- Direct cremation with container provided by purchaser..... \$2,686
- Direct cremation with alternative container (cardboard)..... \$3,056
- Direct cremation with casket selected from our funeral home
(in addition to cost of casket)..... \$2,686

Galante FUNERAL HOME

